

The E Series

Guru Locking

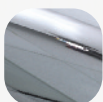


Features & Benefits

- Solid die cast zinc construction
Heavyweight handles with sturdy feel
- Heavy duty-sprung latching wedge
Positive click on closing
- Classic design with a contemporary twist
Create an elegant and stylish window
- Patented cover caps with colour
coordinated finish
Perfectly matching components, even down to
the smallest details



White



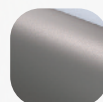
Hardex
Chrome



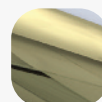
Hardex
Satin



Hardex
Bronze



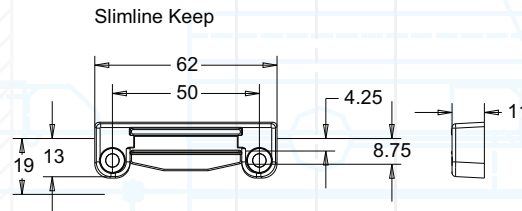
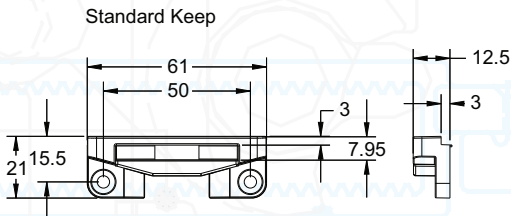
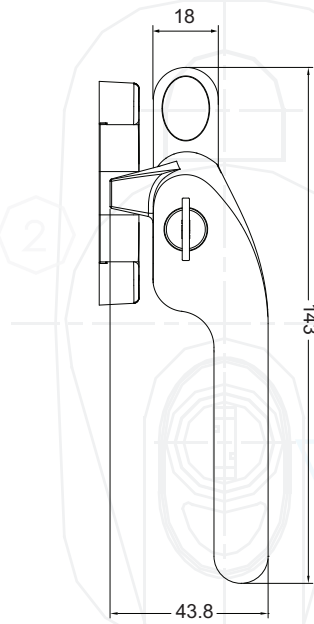
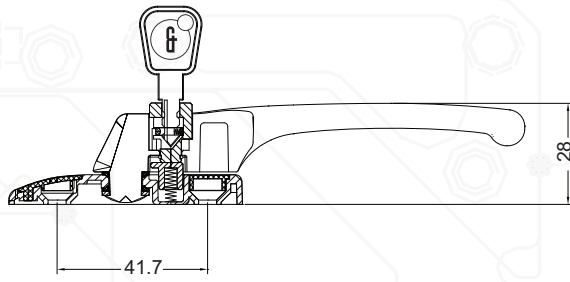
Hardex
Smoke



Hardex
Gold

Fab&Fix

Guru Locking



All dimensions are shown in millimetres

Additional Benefits

- Key clicks into place when inserted
Won't fall out of the lock, even when pivoting the lever
- Slimline and standard keeps available
Compatible with various frame section configurations

Technical Specification

Designed for Timber windows
 Certified to BS 7950: 1997
 All finishes salt spray tested to 480 hours
 (BS EN 1670: Class 5)
 Tested to 50,000 cycles

Product Codes

Guru Locking

| | White | Hardex Chrome | Hardex Satin | Hardex Bronze | Hardex Smoke | Hardex Gold |
|--------------|-------|---------------|--------------|---------------|--------------|-------------|
| Right Handed | 0H000 | 0H001 | 0H002 | 0H003 | 0H004 | 0H005 |
| Left Handed | 0H100 | 0H101 | 0H102 | 0H103 | 0H104 | 0H105 |

Keeps

| | White | Hardex Chrome | Hardex Satin | Hardex Bronze | Hardex Smoke | Hardex Gold |
|----------|-------|---------------|--------------|---------------|--------------|-------------|
| Standard | 0H400 | 0H401 | 0H402 | 0H403 | 0H404 | 0H405 |
| Slim | 0H500 | 0H501 | 0H502 | 0H503 | 0H504 | 0H505 |